

PARK
CENTRAL
EAST



Ayrton Court

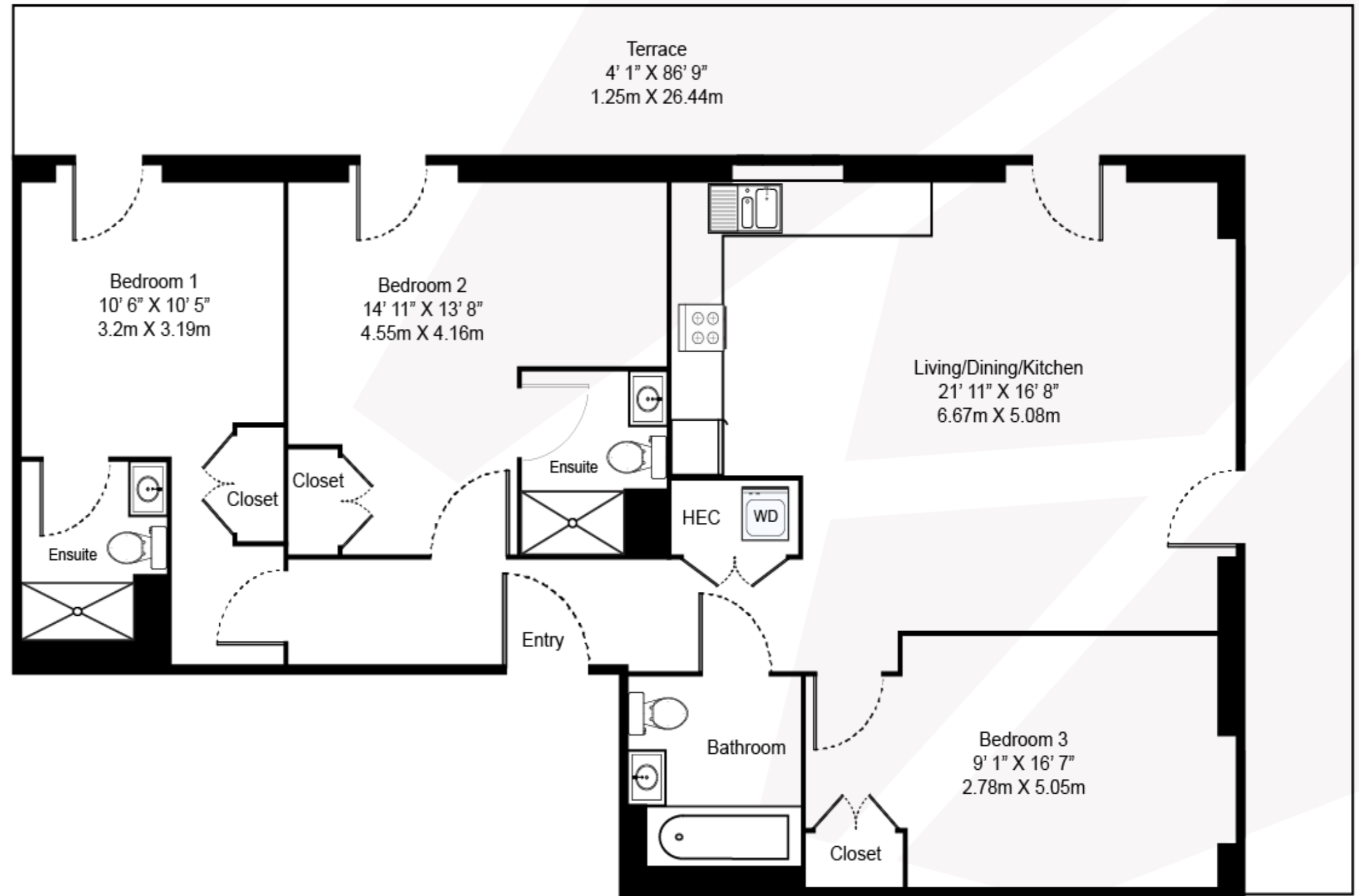
THREE BEDROOM, THREE BATHROOM – AYRTON COURT

Floorplan EC2

This one-of-a-kind three-bedroom, three-bathroom top floor north west facing apartment provides an open layout, built-in blinds, floor-to-ceiling windows and a large wraparound rooftop terrace with stunning, enviable views of the city and perfect for evening sunsets.

Features include underfloor heating throughout the living spaces, splash-back tiling in the kitchen and extra built-in storage space.

This apartment comes fully furnished with our Aspect range.



020 7182 9400

parkcentraleast@livingbylendlease.com

For illustrative purposes only. Exact measurements and dimensions may vary by unit. See your leasing associate for specific apartment information. *Terms and conditions may apply. Pricing and special offers valid for new residents only and subject to change any time.

PCE | EC2 – July 2021



Internal Space: 1,051 sqft / 97.6 sqm
External Space: 366 sqft / 34 sqm

Apartment: 903

Rent: £4,169 per month*

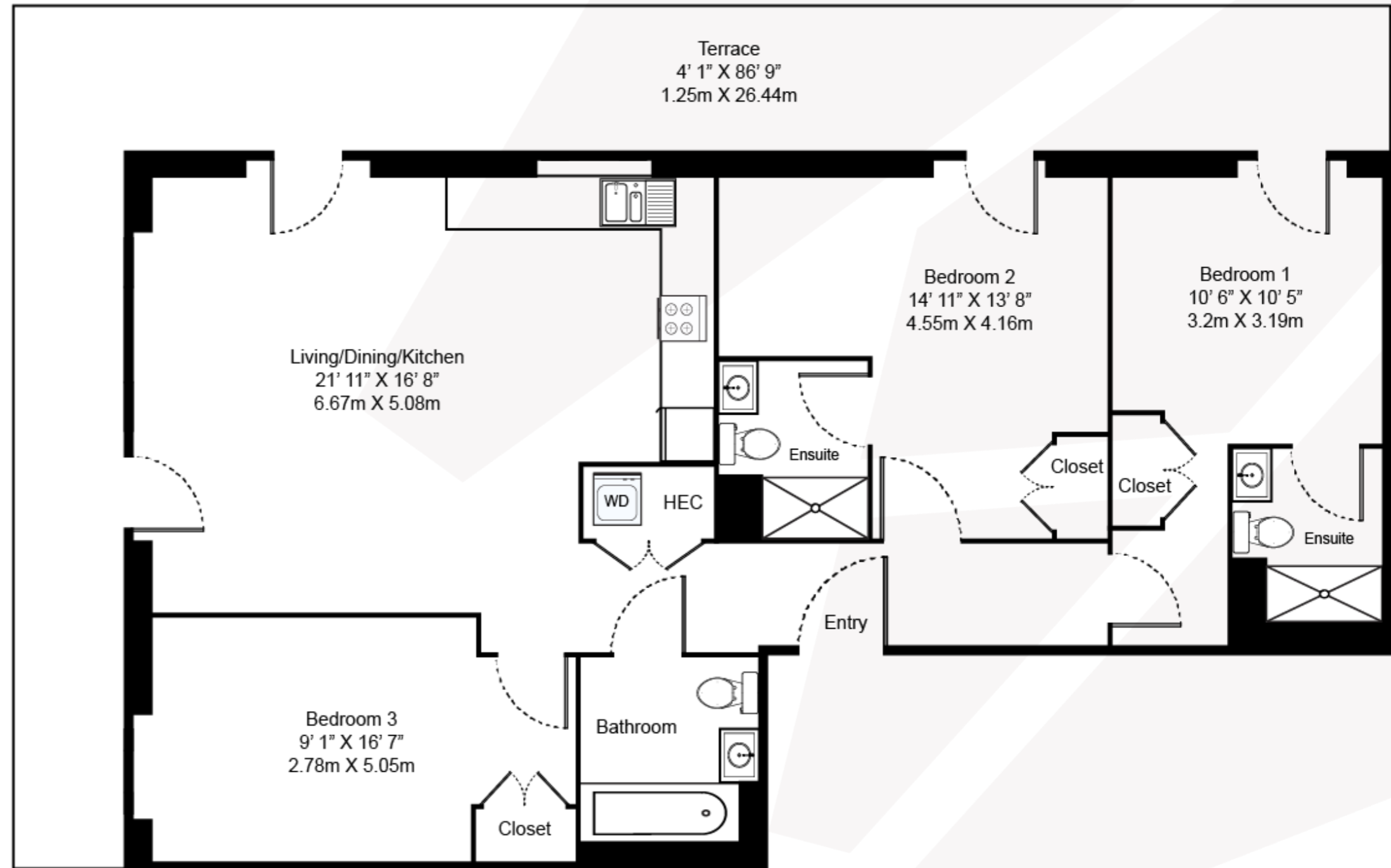
THREE BEDROOM, THREE BATHROOM – AYRTON COURT

Floorplan EC2

This one-of-a-kind three-bedroom, three-bathroom top floor north east facing apartment provides an open layout, built-in blinds, floor-to-ceiling windows and a large wraparound rooftop terrace perfect for sunset views and tranquil views overlooking the private residents' gardens.

Features include underfloor heating throughout the living spaces, splash-back tiling in the kitchen and extra built-in storage space.

This apartment comes fully furnished with our Aspect range.



020 7182 9400

parkcentraleast@livingbylendlease.com

For illustrative purposes only. Exact measurements and dimensions may vary by unit. See your leasing associate for specific apartment information. *Terms and conditions may apply. Pricing and special offers valid for new residents only and subject to change any time.

PCE | EC2.2 – July 2021



Internal Space: 1,051 sqft / 97.6 sqm
External Space: 366 sqft / 34 sqm

Apartment: 904

Rent: £4,169 per month*