

PARK
CENTRAL
EAST



Ayrton Court

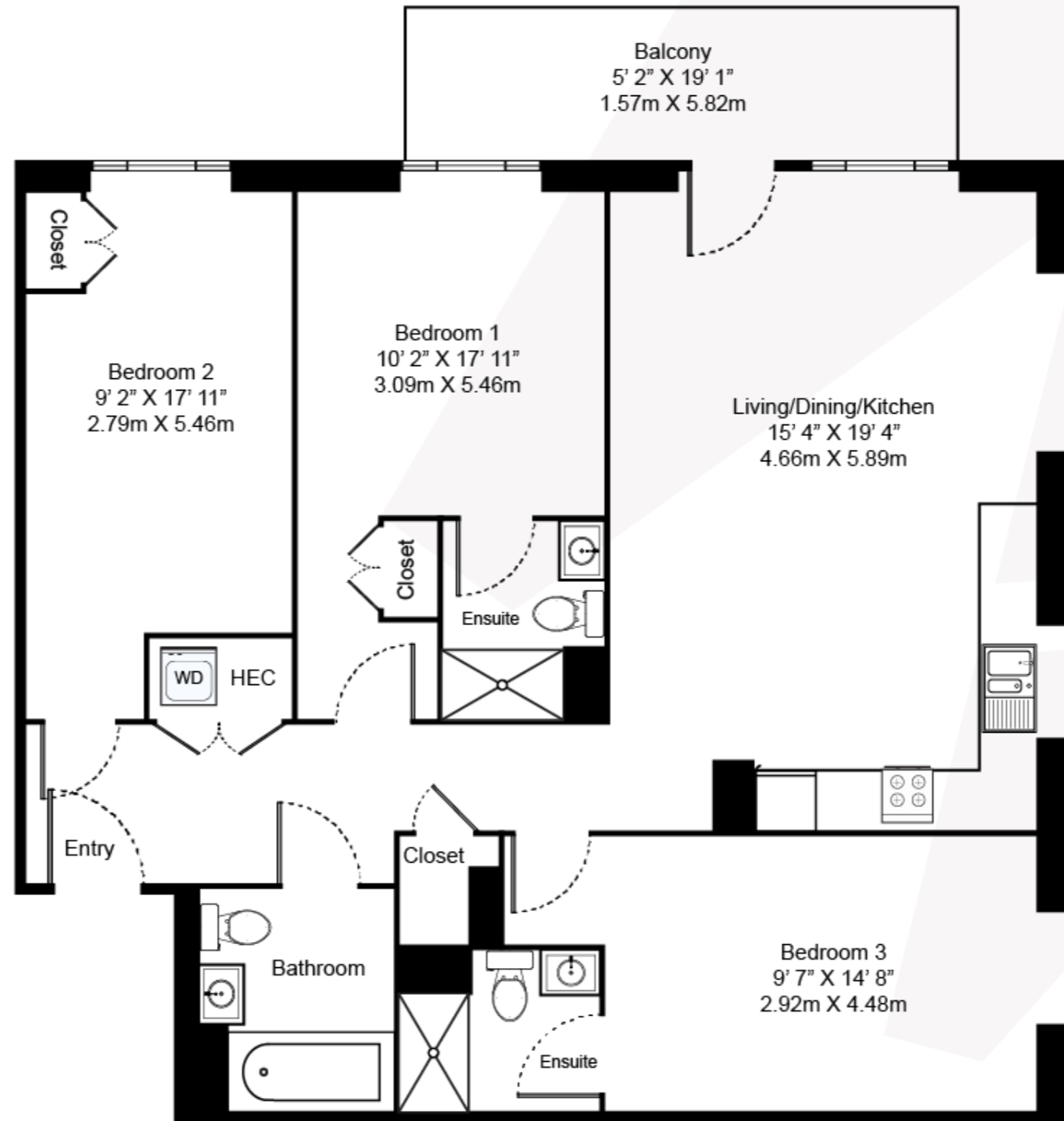
THREE BEDROOM, THREE BATHROOM – AYRTON COURT

Floorplan EC1

This three-bedroom, three-bathroom north west facing apartment offers a balanced living arrangement and large private balcony perfect for evening sunsets and stunning views from your floor-to-ceiling windows with built-in blinds.

Features include underfloor heating throughout the living spaces, splash-back tiling in the kitchen and extra built-in storage space.

This floorplan offers a selection of furnished and unfurnished apartments.



Apartments: 105, 206-806

Rent: Starting from £3,799

Internal Space: 1,054 sqft / 97.9 sqm
External Space: 113 sqft / 10.5 sqm



020 7182 9400
parkcentraleast@livingbylendlease.com

For illustrative purposes only. Exact measurements and dimensions may vary by unit.
See your leasing associate for specific apartment information.

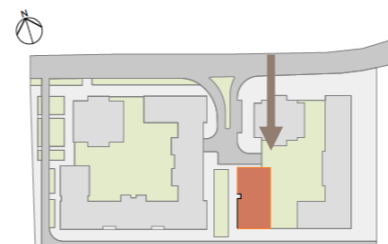
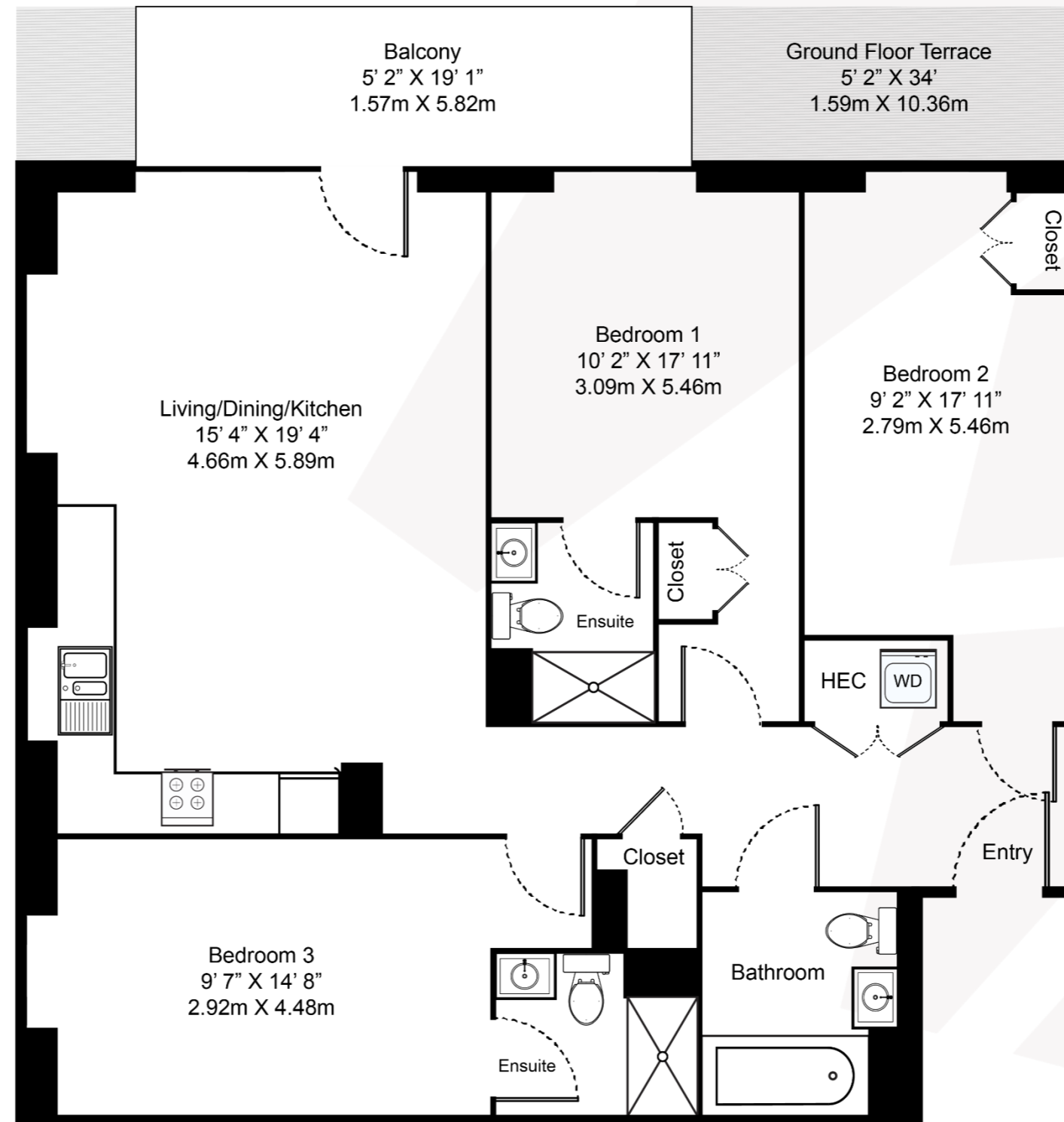
THREE BEDROOM, THREE BATHROOM – AYRTON COURT

Floorplan EC1

This three-bedroom, three-bathroom north east facing apartment offers a balanced living arrangement and large private balcony perfect for evening sunsets and views of the private residents' gardens all from your floor-to-ceiling windows with built-in blinds.

Features include underfloor heating throughout the living spaces, splash-back tiling in the kitchen and extra built-in storage space.

This floorplan offers a selection of furnished and unfurnished apartments.



020 7182 9400
parkcentraleast@livingbylendlease.com

For illustrative purposes only. Exact measurements and dimensions may vary by unit. See your leasing associate for specific apartment information.

PCE | EC1.2 – July 2021

Apartments: 106, 207-807

Rent: Starting from £3,799

Internal Space: 1,058 sqft / 98.3 sqm
 External Space: 113 sqft / 10.5 sqm (ground floor terrace: 194 sqft / 18 sqm)