

PARK
CENTRAL
EAST



Verdoux Apartments

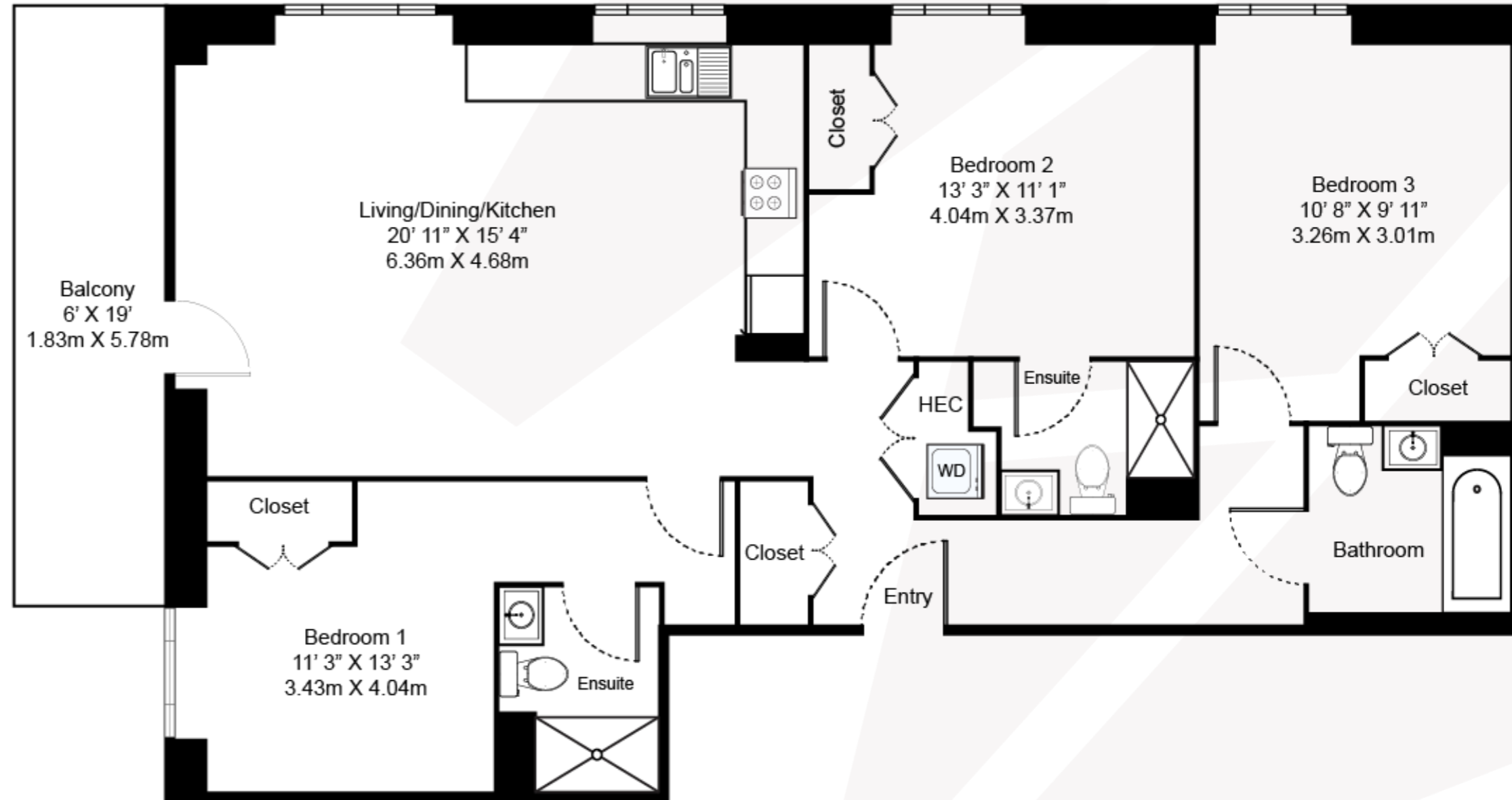
THREE BEDROOM, THREE BATHROOM – VERDOUX APARTMENTS

Floorplan DC2

This stunning three-bedroom, three-bathroom north west facing apartment offers spacious living areas with large private outdoor balcony and beautiful views overlooking the private residents' gardens all from your floor-to-ceiling unobstructed portrait windows.

Features include underfloor heating throughout the home, splash-back tiling in the kitchen and extra built-in storage space.

This floorplan offers a selection of furnished and unfurnished apartments.



**PARK
CENTRAL
EAST**

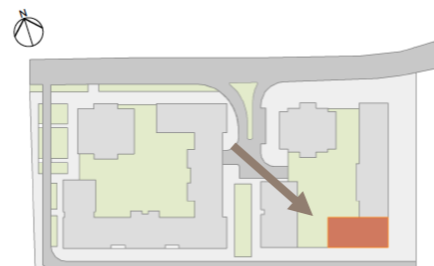


020 7182 9400

parkcentraleast@livingbylendlease.com

For illustrative purposes only. Exact measurements and dimensions may vary by unit. See your leasing associate for specific apartment information.

PCE | DC2 – July 2021



Internal Space: 1,052 sqft / 97.7 sqm
External Space: 110 sqft / 10.2 sqm

Apartments: 205-1105

Rent: Starting from £3,779