

PARK  
CENTRAL  
EAST



Ayrton Court



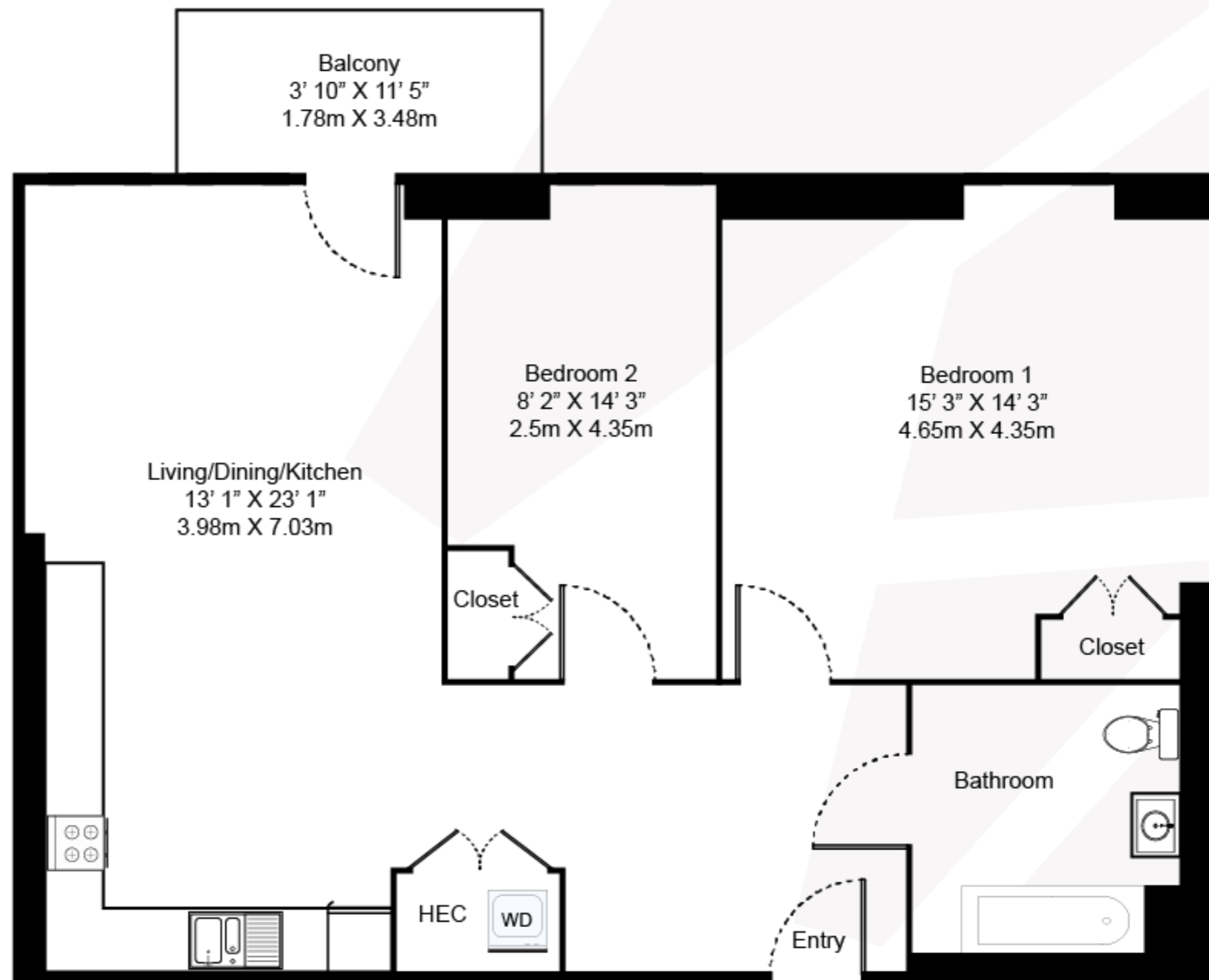
# TWO BEDROOM, ONE BATHROOM – AYRTON COURT

## Floorplan EB2D

This two-bedroom, one-bathroom east facing apartment offers spacious living areas with private outdoor balcony perfect for morning sunlight and stunning views overlooking the private residents' gardens all from your floor-to-ceiling windows with built-in blinds.

Features include underfloor heating throughout the home, splash-back tiling in the kitchen and extra built-in storage space.

This floorplan offers a selection of furnished and unfurnished apartments.



020 7182 9400  
[parkcentraleast@livingbylendlease.com](mailto:parkcentraleast@livingbylendlease.com)

For illustrative purposes only. Exact measurements and dimensions may vary by unit. See your leasing associate for specific apartment information.

PCE | EB2D – June 2021



Internal Space: 861 sqft / 80 sqm  
External Space: 67 sqft / 6.2 sqm

**Apartments:** 208-808

**Rent:** Starting from £2,650