

PARK  
CENTRAL  
EAST



Ayrton Court



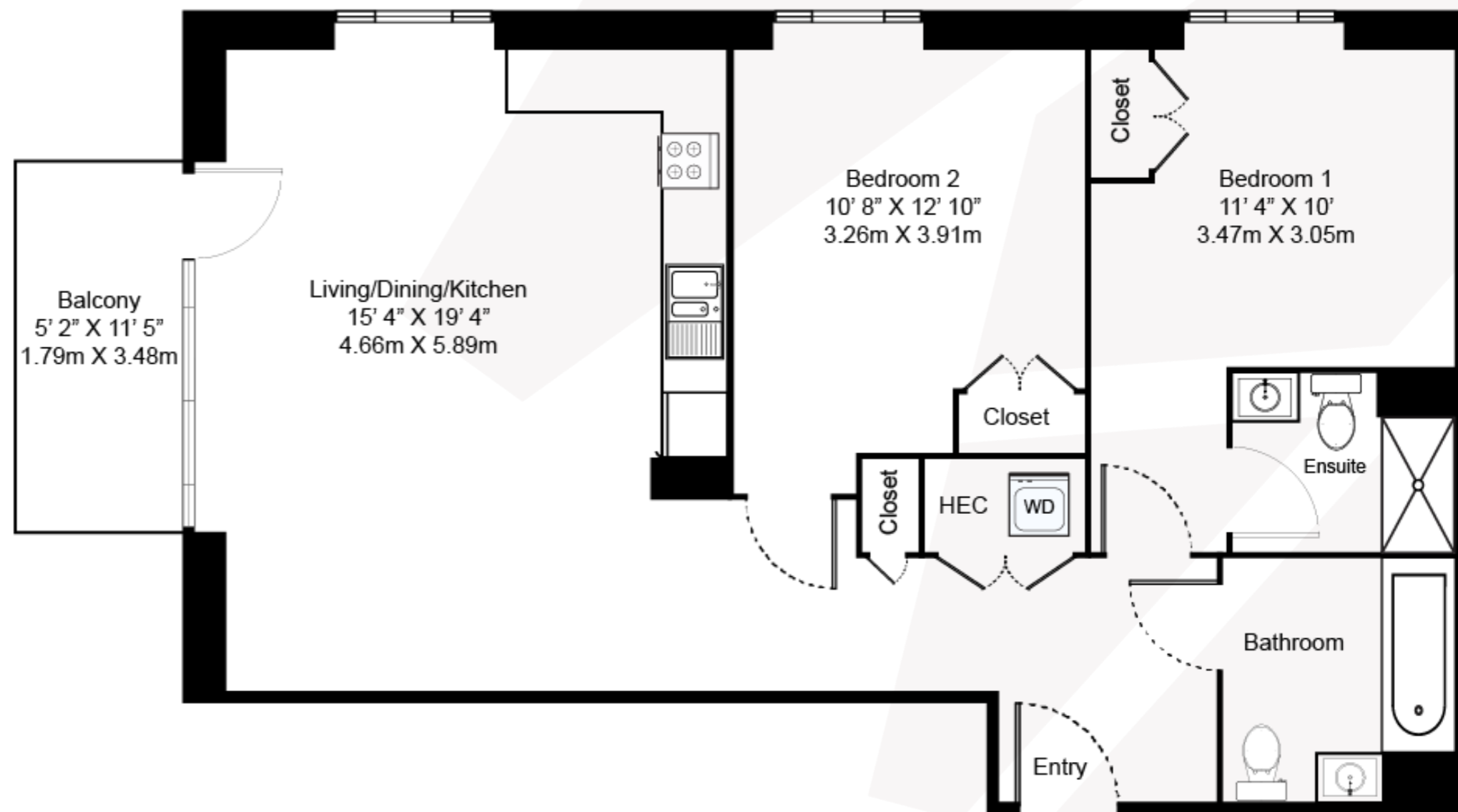
# TWO BEDROOM, TWO BATHROOM – AYRTON COURT

## Floorplan EB1

This two-bedroom, two-bathroom south west facing apartment offers spacious living areas with private outdoor balcony and stunning views overlooking Elephant Park all from your floor-to-ceiling windows with built-in blinds.

Features include underfloor heating throughout the home, splash-back tiling in the kitchen and extra built-in storage space.

This floorplan offers a selection of furnished and unfurnished apartments.

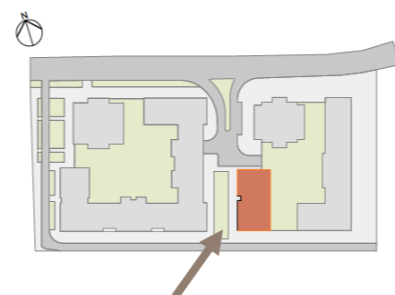


020 7182 9400

[parkcentraleast@livingbylendlease.com](mailto:parkcentraleast@livingbylendlease.com)

For illustrative purposes only. Exact measurements and dimensions may vary by unit. See your leasing associate for specific apartment information.

PCE | EB1 – June 2021



Internal Space: 791 sqft / 73.5 sqm  
External Space: 69 sqft / 6.4 sqm

**Apartments:** 105, 206-806

**Rent:** Starting from £2,759



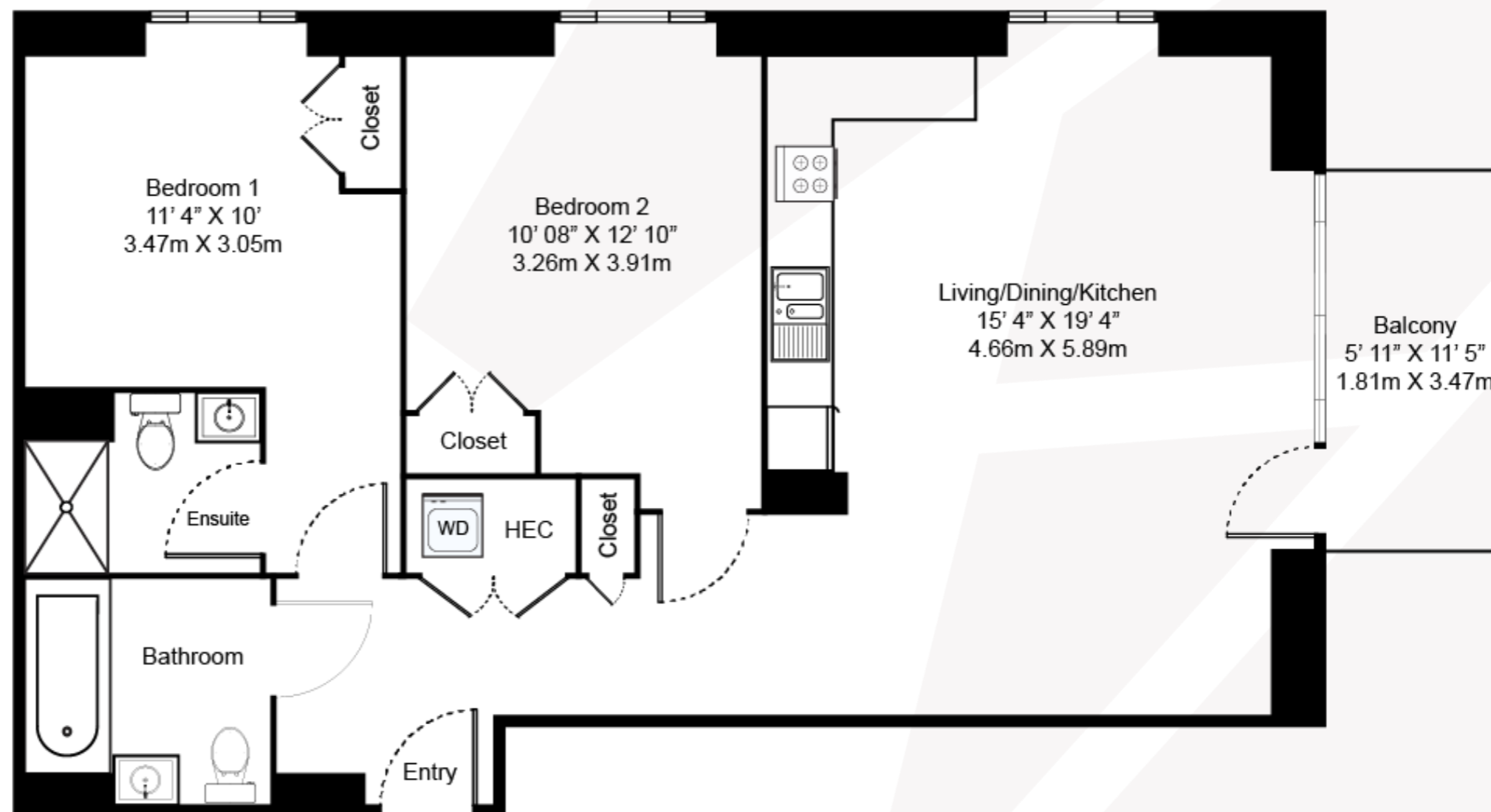
# TWO BEDROOM, TWO BATHROOM – AYRTON COURT

## Floorplan EB1

This two-bedroom, two-bathroom south east facing apartment offers spacious living areas with private outdoor balcony and stunning views overlooking Elephant Park all from your floor-to-ceiling windows with built-in blinds.

Features include underfloor heating throughout the home, splash-back tiling in the kitchen and extra built-in storage space.

This floorplan offers a selection of furnished and unfurnished apartments.

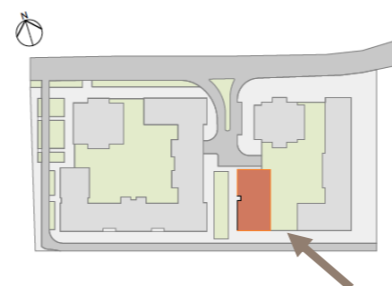


020 7182 9400

[parkcentraleast@livingbylendlease.com](mailto:parkcentraleast@livingbylendlease.com)

For illustrative purposes only. Exact measurements and dimensions may vary by unit. See your leasing associate for specific apartment information.

PCE | EB1.2 – June 2021



Internal Space: 795 sqft / 73.9 sqm  
External Space: 69 sqft / 6.4 sqm

**Apartments:** 106, 207-807

**Rent:** Starting from £2,759