

PARK  
CENTRAL  
EAST



Verdoux Apartments

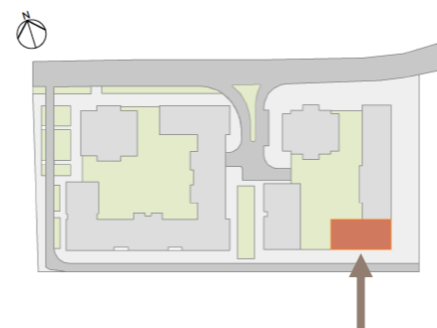
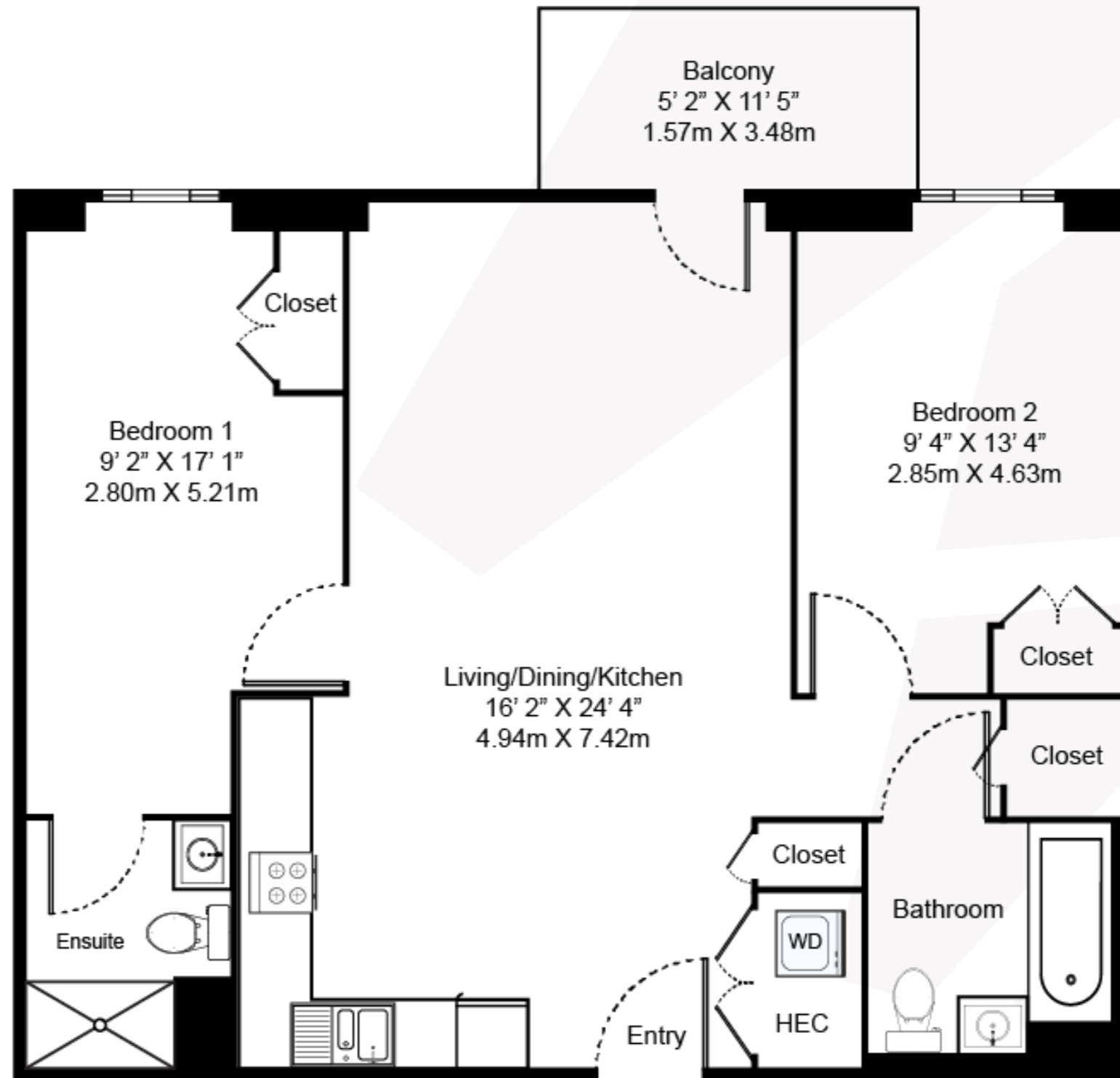
# TWO BEDROOM, TWO BATHROOM – VERDOUX APARTMENTS

## Floorplan DB1

This two-bedroom, two-bathroom south facing apartment offers spacious living areas with private outdoor balcony and stunning views overlooking Elephant Park all from your floor-to-ceiling windows with built-in blinds.

Features include underfloor heating throughout the home, splash-back tiling in the kitchen and extra built-in storage space.

This floorplan offers a selection of furnished and unfurnished apartments.



Internal Space: 778 sqft / 72.3 sqm  
External Space: 67 sqft / 6.2 sqm



020 7182 9400

[parkcentraleast@livingbylendlease.com](mailto:parkcentraleast@livingbylendlease.com)

For illustrative purposes only. Exact measurements and dimensions may vary by unit. See your leasing associate for specific apartment information.

PCE | DB1 – June 2021

**Apartments:** 103-1103

**Rent:** Starting from £2,650