

PARK
CENTRAL
EAST



Ayrton Court

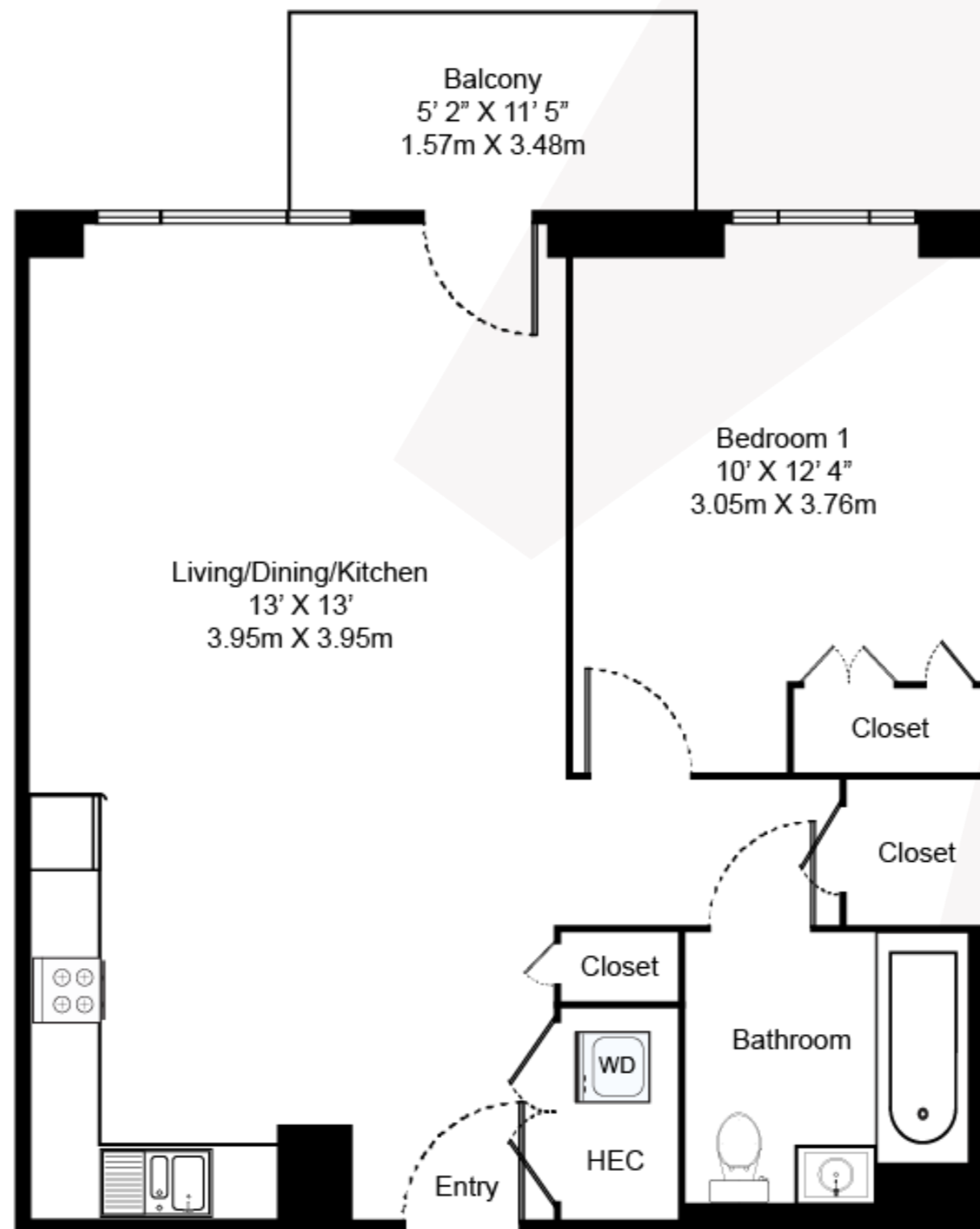
ONE BEDROOM, ONE BATHROOM – AYRTON COURT

Floorplan EA1

This one-bedroom, one-bathroom south facing apartment offers a spacious main living area with private outdoor balcony and stunning views overlooking Elephant Park all from your floor-to-ceiling windows with built-in blinds.

Features include underfloor heating throughout the home, splash-back tiling in the kitchen and extra built-in storage space.

This floorplan offers a selection of furnished and unfurnished apartments.



Apartments: 101, 202-802

Rent: Starting from £1,960



020 7182 9400

parkcentraleast@livingbylendlease.com

For illustrative purposes only. Exact measurements and dimensions may vary by unit.
See your leasing associate for specific apartment information.

PCE | EA1 – June 2021

Internal Space: 548 sqft / 50.9 sqm
External Space: 67 sqft / 6.2 sqm

