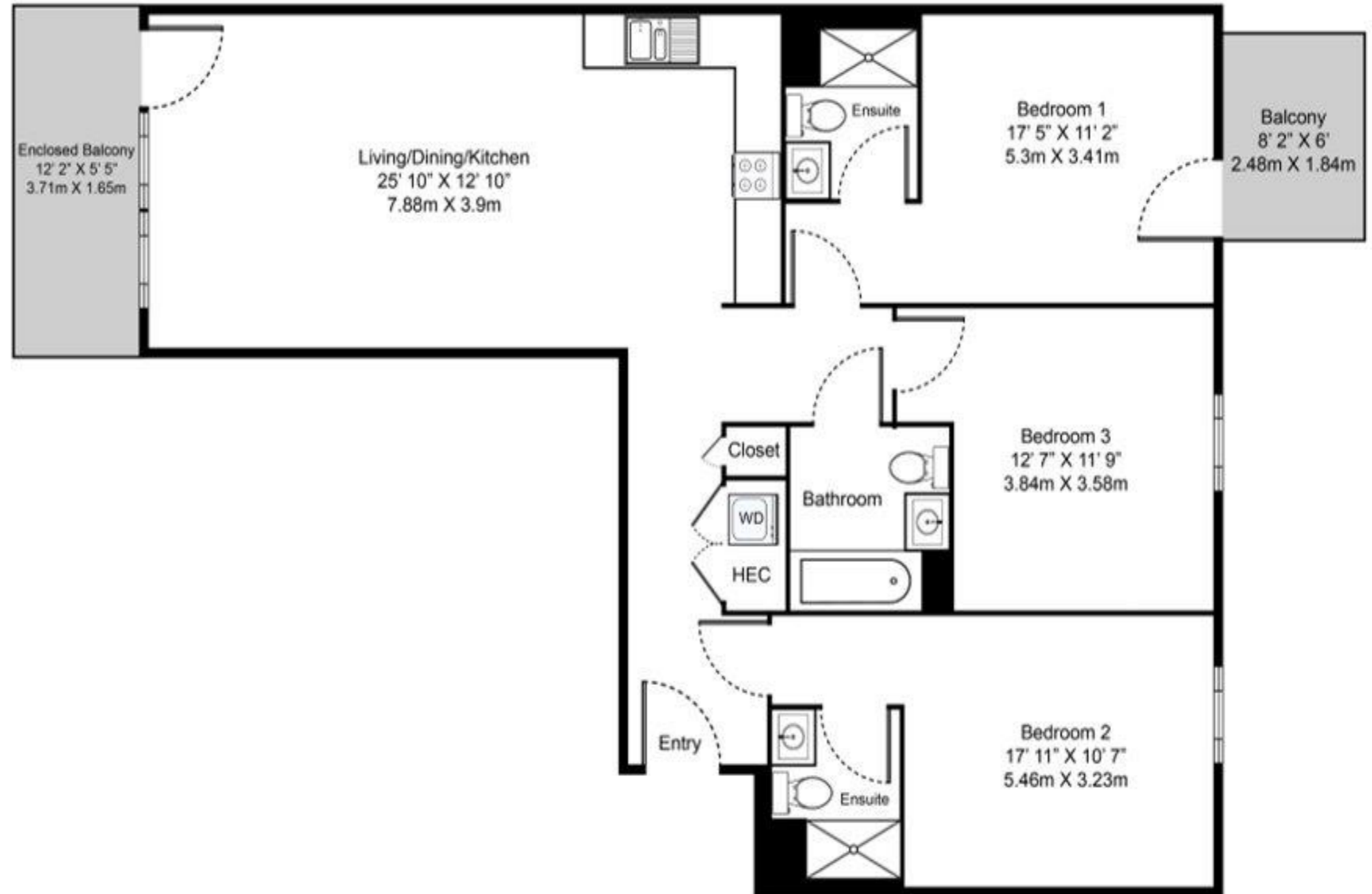


THREE BEDROOM, THREE BATHROOM – ASHWELL APARTMENTS

Floorplan AC1

This three-bedroom, three-bathroom floorplan features an open layout, underfloor heating throughout, feature splash-back tiling in the kitchen and floor-to-ceiling windows facing both north and south aspects.

Each comes equipped with two private outdoor spaces overlooking both Elephant Park and the private residents' gardens and offers a choice between furnished or unfurnished apartments.



020 7182 9300

parkcentralwest@livingbylendlease.com

For illustrative purposes only. Exact measurements and dimensions may vary by unit. See your leasing associate for specific apartment information.

PCW | AC1 – March 2021

Internal Space: 1,038 sqft/96.4 sqm
External Space: 112 sqft/10.4 sqm

