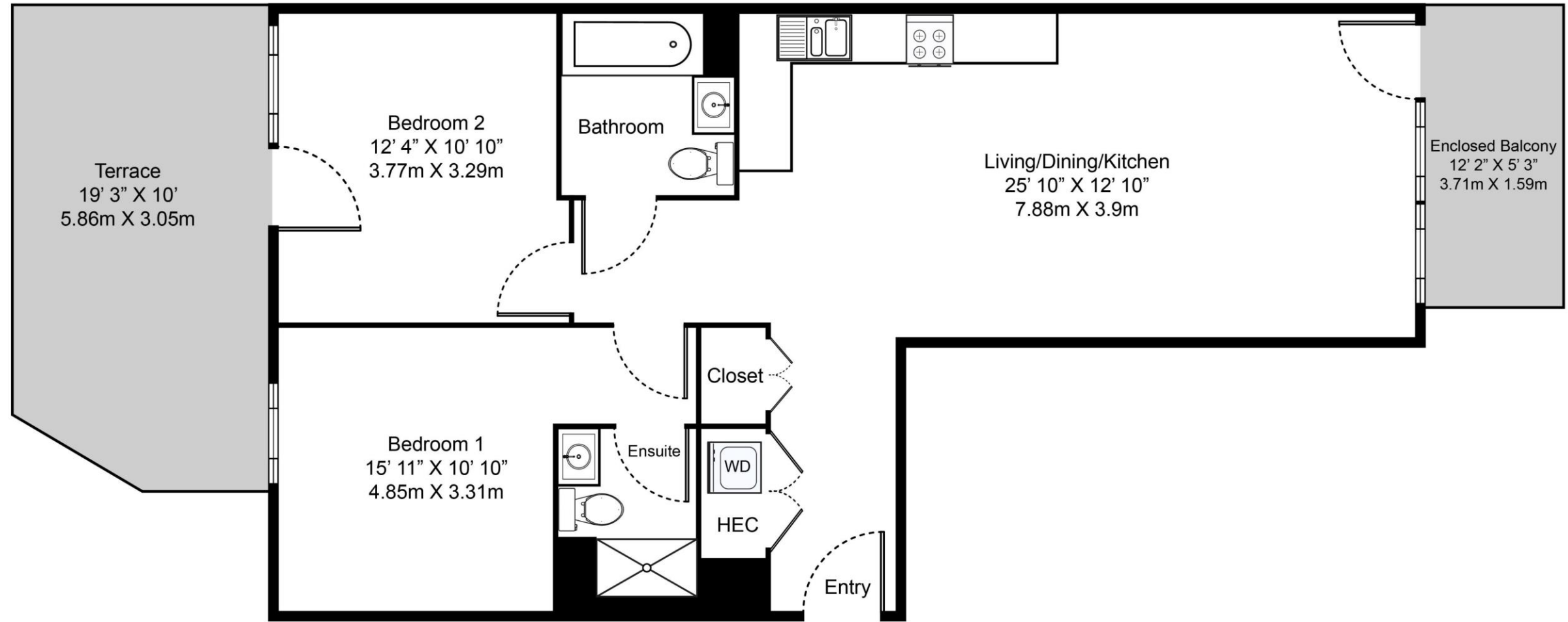


# TWO BEDROOM, TWO BATHROOM – MAURICE HOUSE

## Floorplan CB2

This unique two-bedroom, two-bathroom ground floor apartment features dual aspect north and south views from its two separate outdoor spaces with private access to the residents' gardens from the terrace and views of Elephant Park from the balcony.

With floor-to-ceiling windows, additional built-in storage space, underfloor heating throughout the living areas and feature splash-back tiling in the kitchen, this furnished apartment is entirely one-of-a-kind.



Apartment: 101



020 7182 9300

[parkcentralwest@livingbylndlease.com](mailto:parkcentralwest@livingbylndlease.com)

For illustrative purposes only. Exact measurements and dimensions may vary by unit. See your leasing associate for specific apartment information.

PCW | CB2 – March 2021

Internal Space: 813 sqft/75.5 sqm  
External Space: 242 sqft/22.5 sqm

