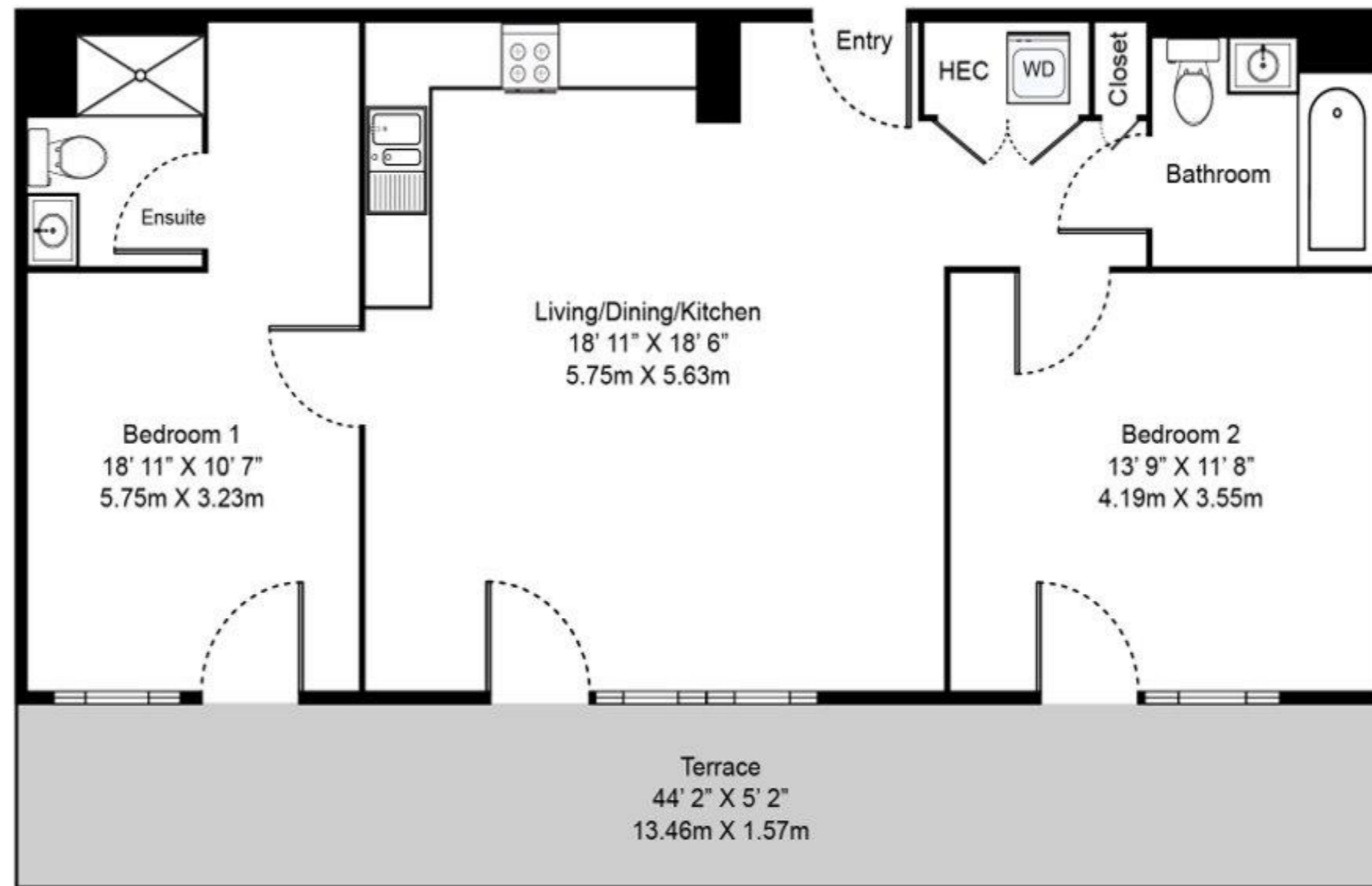


TWO BEDROOM, TWO BATHROOM – ASHWELL APARTMENTS

Floorplan AB4

This distinctive two-bedroom, two-bathroom top floor apartment offers a generous extra large private terrace with southern views overlooking Elephant Park.

Equipped with an open layout in the centre of the home, feature splash-back tiling in the kitchen, underfloor heating and floor-to-ceiling windows, this floorplan is one-of-a-kind and comes furnished with our Aspect range.



020 7182 9300
parkcentralwest@livingbylendlease.com

For illustrative purposes only. Exact measurements and dimensions may vary by unit. See your leasing associate for specific apartment information.

PCW | AB4 – March 2021

Apartment: 902

Internal Space: 821 sqft/76.3 sqm
External Space: 216 sqft/20.1 sqm

