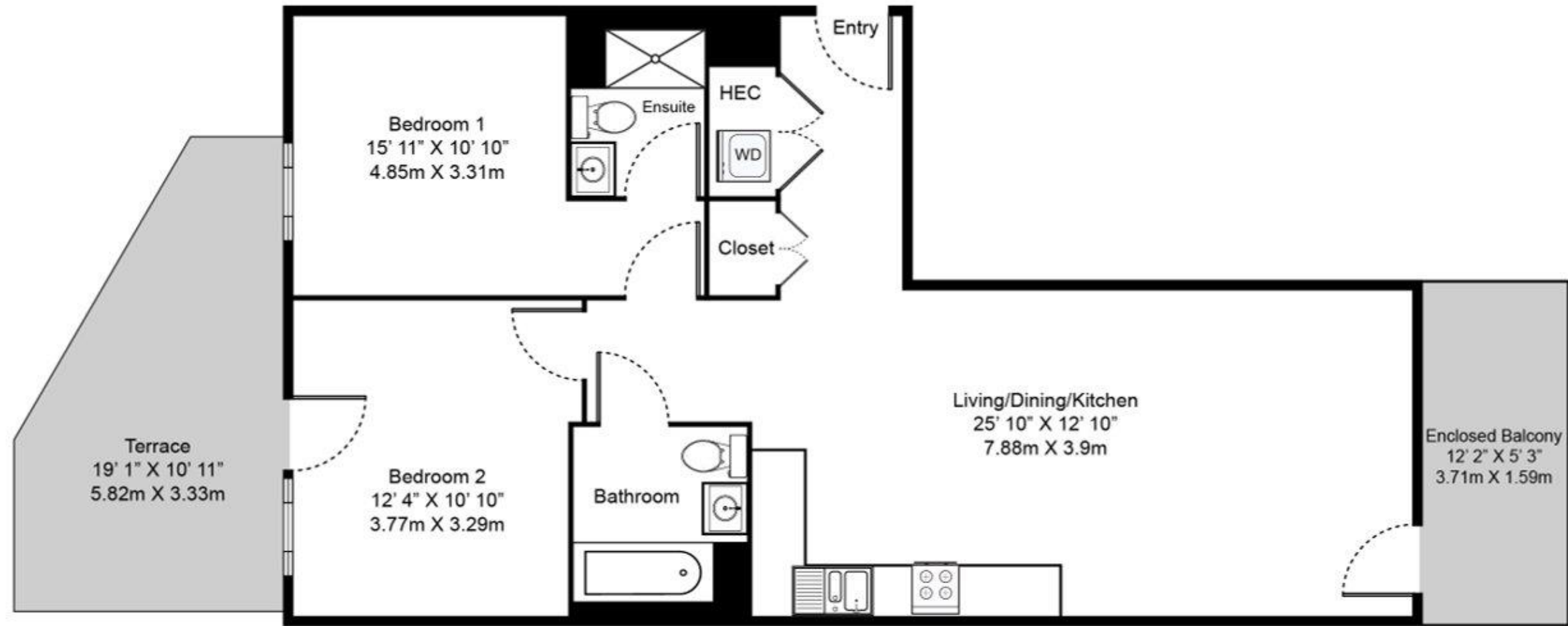


TWO BEDROOM, TWO BATHROOM – ASHWELL APARTMENTS

Floorplan AB3

This one-of-a-kind two-bedroom, two-bathroom ground floor apartment features two separate outdoor spaces including private access to the residents' garden from the terrace.

With its unique open layout, feature splash-back tiling in the kitchen and floor-to-ceiling windows, this home features stunning dual views to the south overlooking Elephant Park and to the north over the community gardens.



020 7182 9300

parkcentralwest@livingbylendlease.com

For illustrative purposes only. Exact measurements and dimensions may vary by unit. See your leasing associate for specific apartment information.

PCW | AB3 – March 2021

Apartment: 105

Internal Space: 813 sqft/75.5 sqm
External Space: 222 sqft/20.6 sqm

