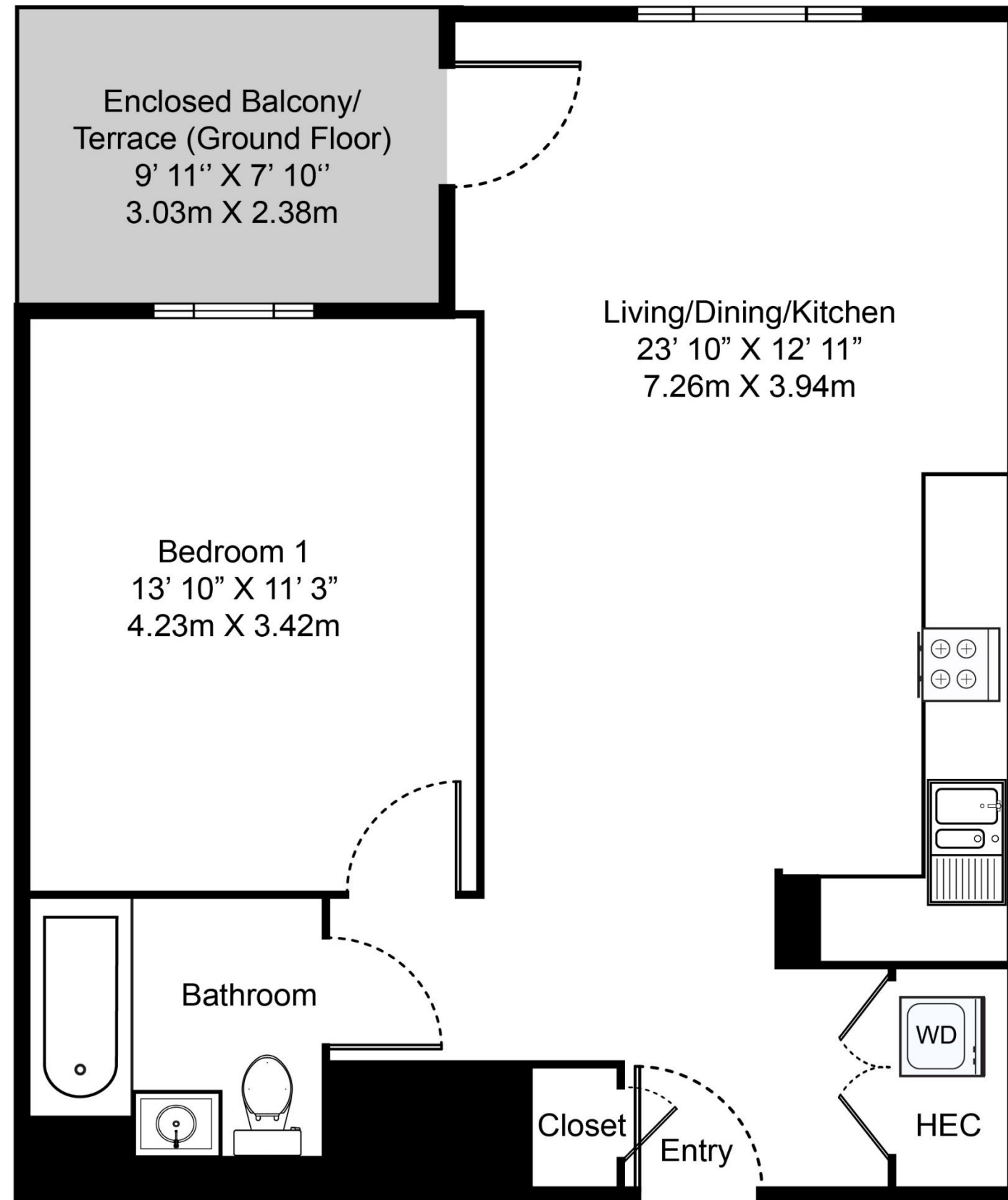


ONE BEDROOM, ONE BATHROOM – VOWLER HOUSE

Floorplan BA2

This one-bedroom, one-bathroom floorplan features north facing views and a unique portrait window offering unobstructed views of the private residents' gardens.

Equipped with underfloor heating throughout the living spaces, floor-to-ceiling windows, feature splash-back tiling in the kitchen and a private outdoor space, this floorplan offers a selection of furnished and unfurnished apartments.



020 7182 9300

parkcentralwest@livingbylendlease.com

For illustrative purposes only. Exact measurements and dimensions may vary by unit. See your leasing associate for specific apartment information.

PCW | BA2 – March 2021

Internal Space: 603 sqft/56.1 sqm
External Space: 72 sqft/6.9 sqm

