

PARK  
CENTRAL  
EAST



Ayrton Court



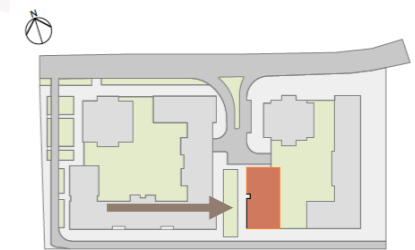
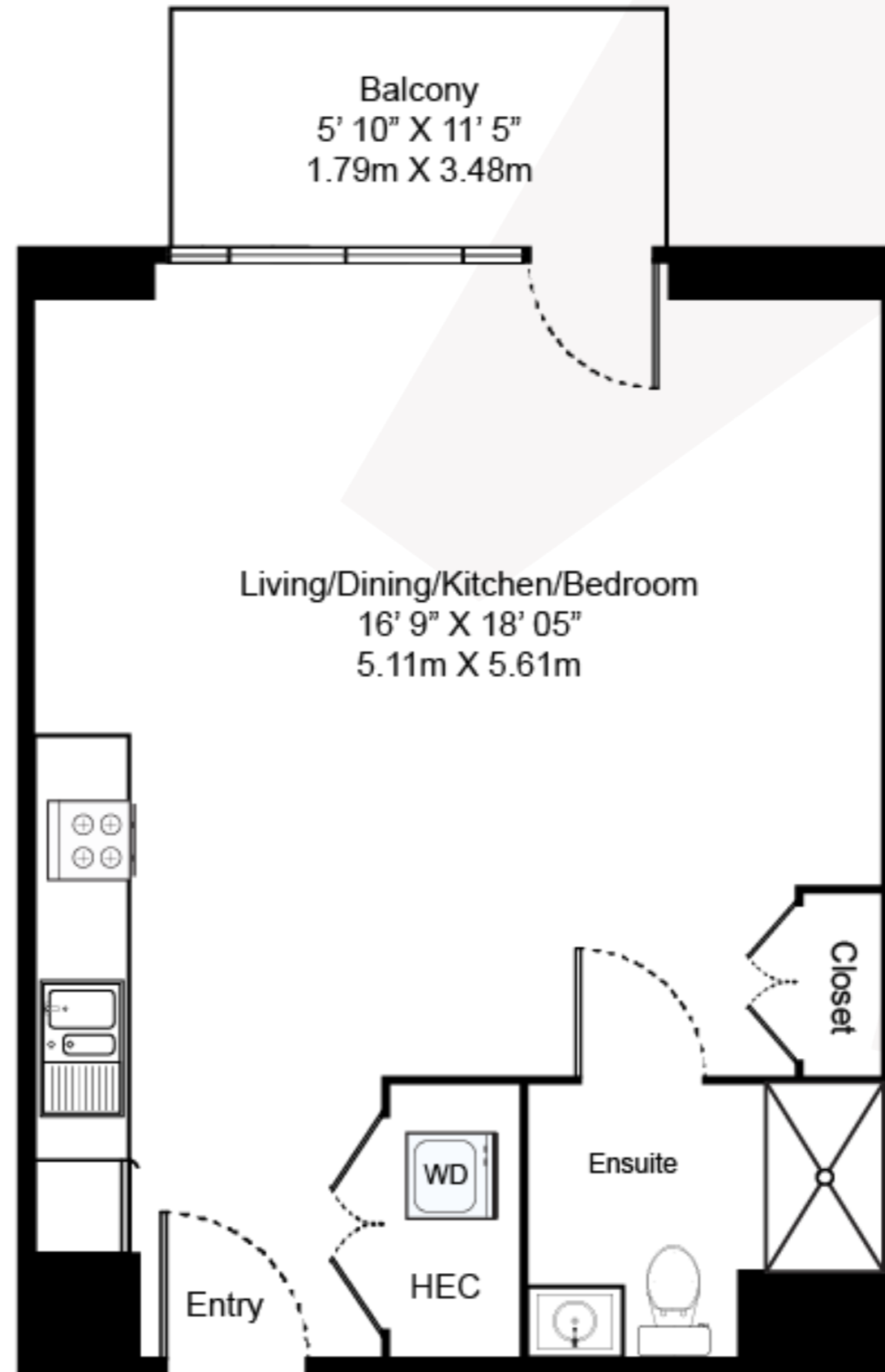
# STUDIO APARTMENT – AYRTON COURT

## Floorplan ES1

This spacious west facing studio apartment offers a private outdoor balcony, floor-to-ceiling windows and built-in blinds.

Features include underfloor heating throughout the home, splash-back tiling in the kitchen and extra built-in storage space.

This floorplan offers a selection of furnished and unfurnished apartments.



**PARK  
CENTRAL  
EAST** 

020 7182 9400

[parkcentraleast@livingbylendlease.com](mailto:parkcentraleast@livingbylendlease.com)

For illustrative purposes only. Exact measurements and dimensions may vary by unit.  
See your leasing associate for specific apartment information.

PCE | ES1 – June 2021

Internal Space: 423 sqft / 39.3 sqm  
External Space: 69 sqft / 6.4 sqm

**Apartments:** 103, 204-804

**Rent:** Starting from £1,769



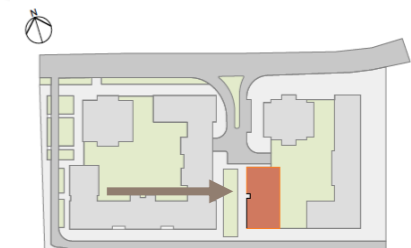
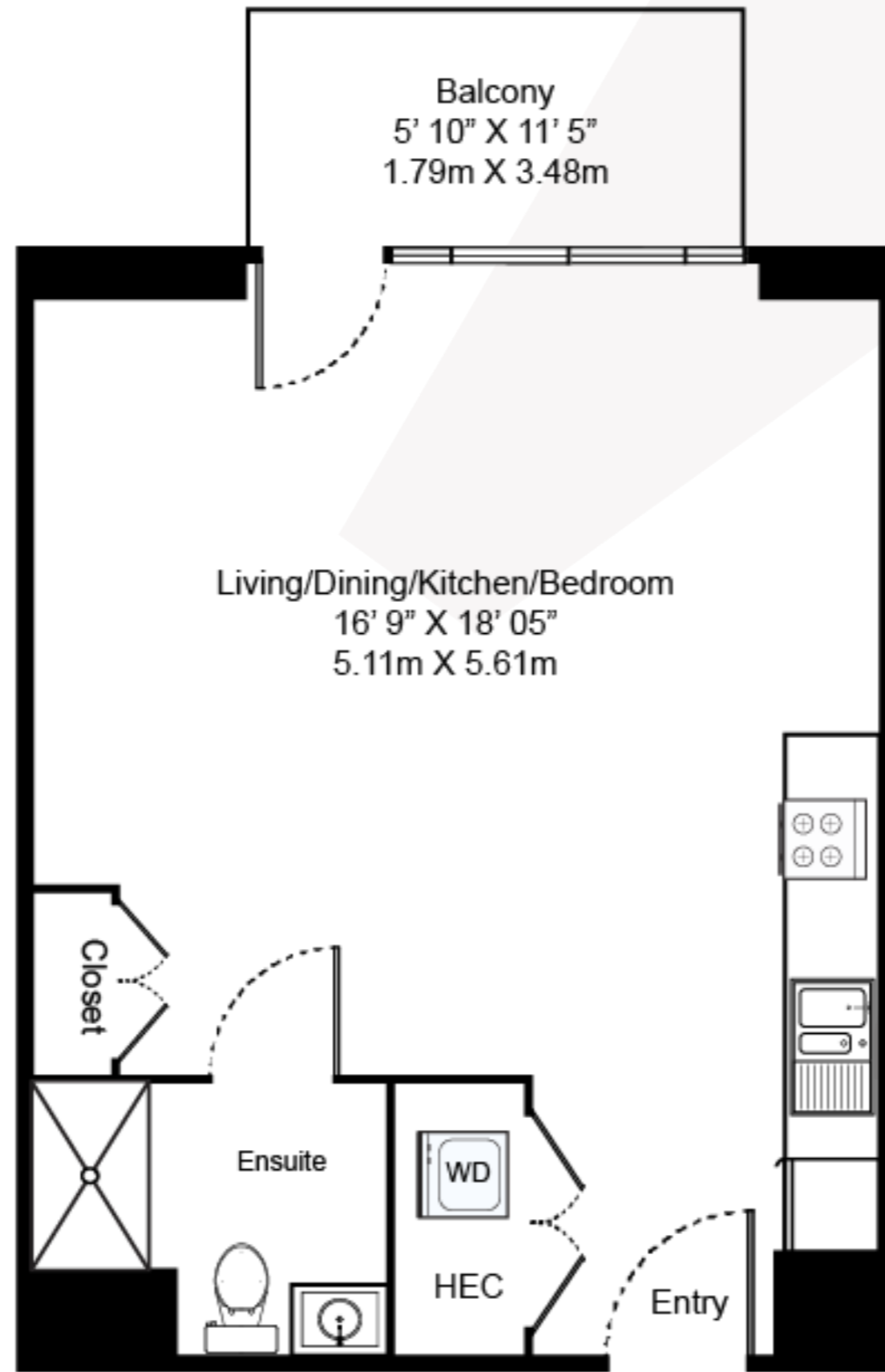
# STUDIO APARTMENT – AYRTON COURT

## Floorplan ES1

This spacious west facing studio apartment offers a private outdoor balcony, floor-to-ceiling windows and built-in blinds.

Features include underfloor heating throughout the home, splash-back tiling in the kitchen and extra built-in storage space.

This floorplan offers a selection of furnished and unfurnished apartments.



020 7182 9400

[parkcentraleast@livingbylendlease.com](mailto:parkcentraleast@livingbylendlease.com)

For illustrative purposes only. Exact measurements and dimensions may vary by unit. See your leasing associate for specific apartment information.

PCE | ES1.2 – June 2021

Internal Space: 423 sqft / 39.3 sqm  
External Space: 69 sqft / 6.4 sqm

**Apartments:** 104, 205-805

**Rent:** Starting from £1,769