

PARK
CENTRAL
EAST



Verdoux Apartments

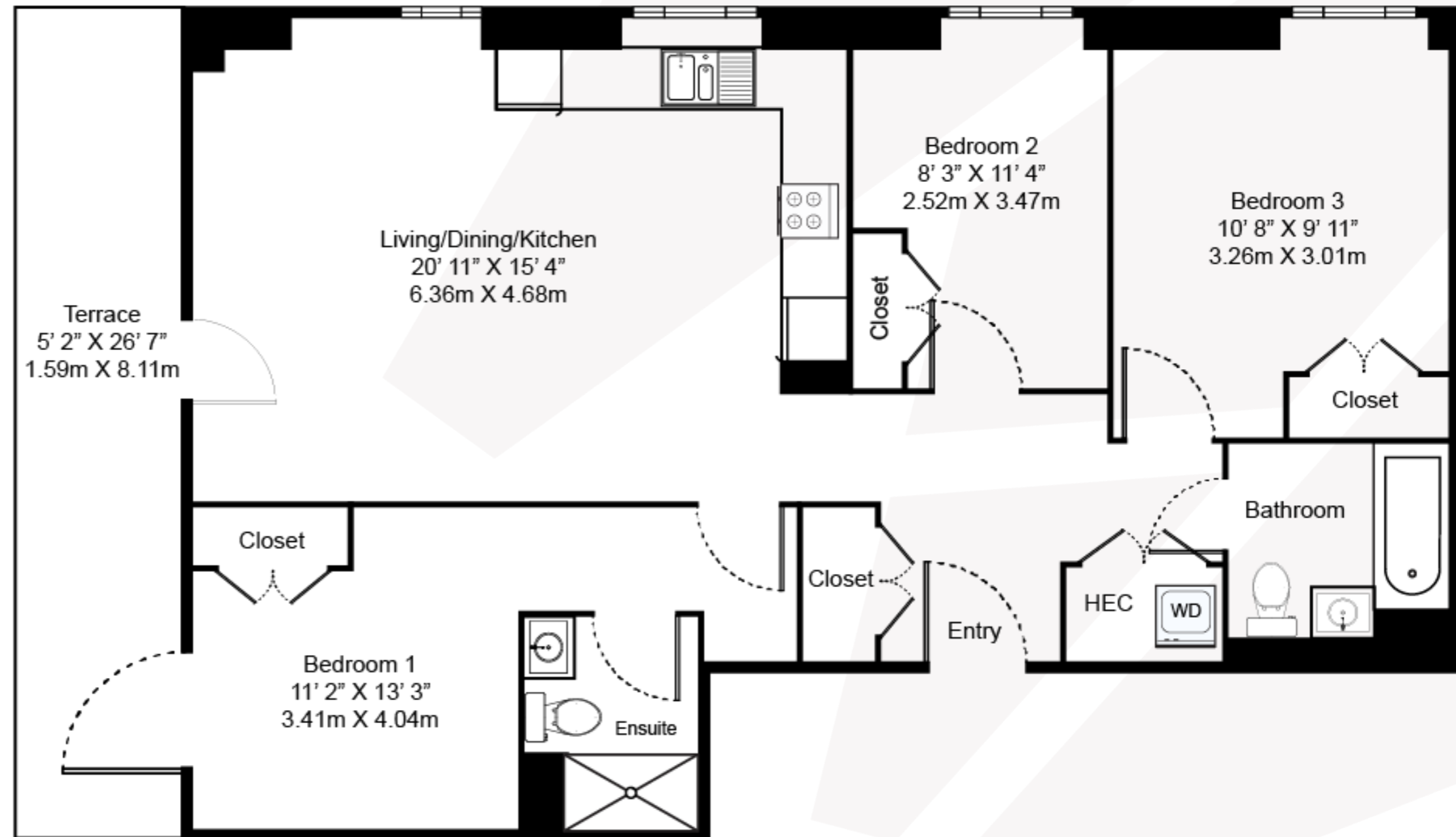
THREE BEDROOM, TWO BATHROOM – VERDOUX APARTMENTS

Floorplan DC1

This bespoke three-bedroom, two-bathroom north west facing apartment offers spacious living areas with large private outdoor terrace and gorgeous views overlooking the private residents' gardens all from your floor-to-ceiling unobstructed portrait window.

Features include underfloor heating throughout the living space, splash-back tiling in the kitchen and additional built-in storage space.

This floorplan comes unfurnished and is ready to paint and decorate to your heart's content.

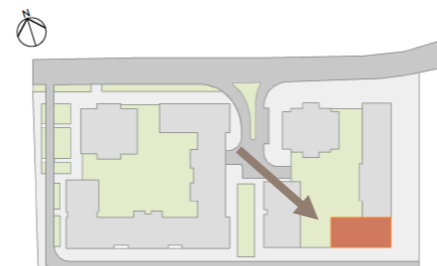


020 7182 9400

parkcentraleast@livingbylendlease.com

For illustrative purposes only. Exact measurements and dimensions may vary by unit. See your leasing associate for specific apartment information. *Terms and conditions may apply. Pricing and special offers valid for new residents only and subject to change ant any time.

PCE | DC1 – July 2021



Internal Space: 952 sqft / 88.4 sqm
External Space: 153 sqft / 14.2 sqm

Apartment: 105

Rent: £3,650 per month*