

PARK  
CENTRAL  
EAST



Asha Point

# TWO BEDROOM, TWO BATHROOM – ASHA POINT

## Floorplan AB1

This two-bedroom, two-bathroom dual aspect north east facing apartment offers the ideal living space with private outdoor balcony and stunning views of the London skyline on higher floors. Lower floors offer a vibrant street life below for endless people-watching all from your floor-to-ceiling windows with built-in blinds.

Features include underfloor heating throughout the living spaces, splash-back tiling in the kitchen and built-in storage space.

This floorplan offers a selection of furnished and unfurnished apartments.

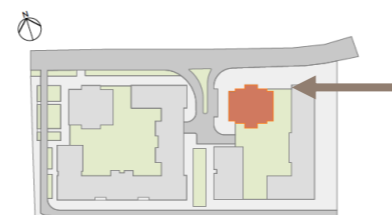
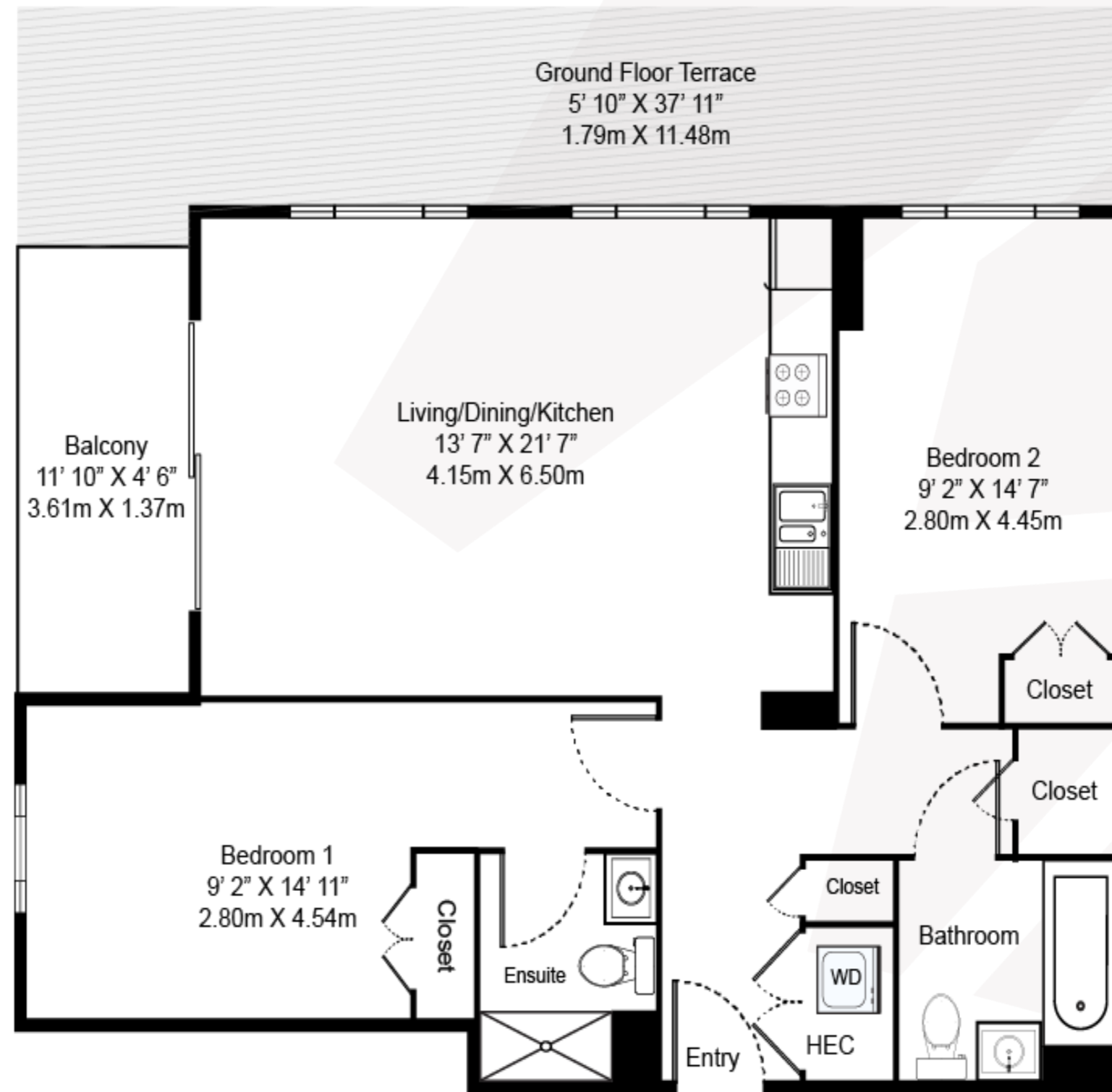


020 7182 9400

[parkcentraleast@livingbylendlease.com](mailto:parkcentraleast@livingbylendlease.com)

For illustrative purposes only. Exact measurements and dimensions may vary by unit. See your leasing associate for specific apartment information.

PCE | AB1 – June 2021



Internal Space: 797 sqft/74 sqm  
External Space: 52 sqft/4.8 sqm (ground floor 291 sqft/27 sqm)

**Apartments:** 103, 206-2406

**Rent:** Starting from £2,749

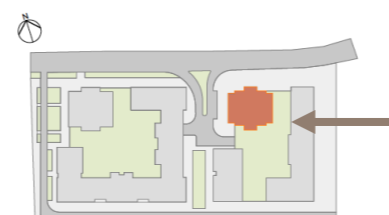
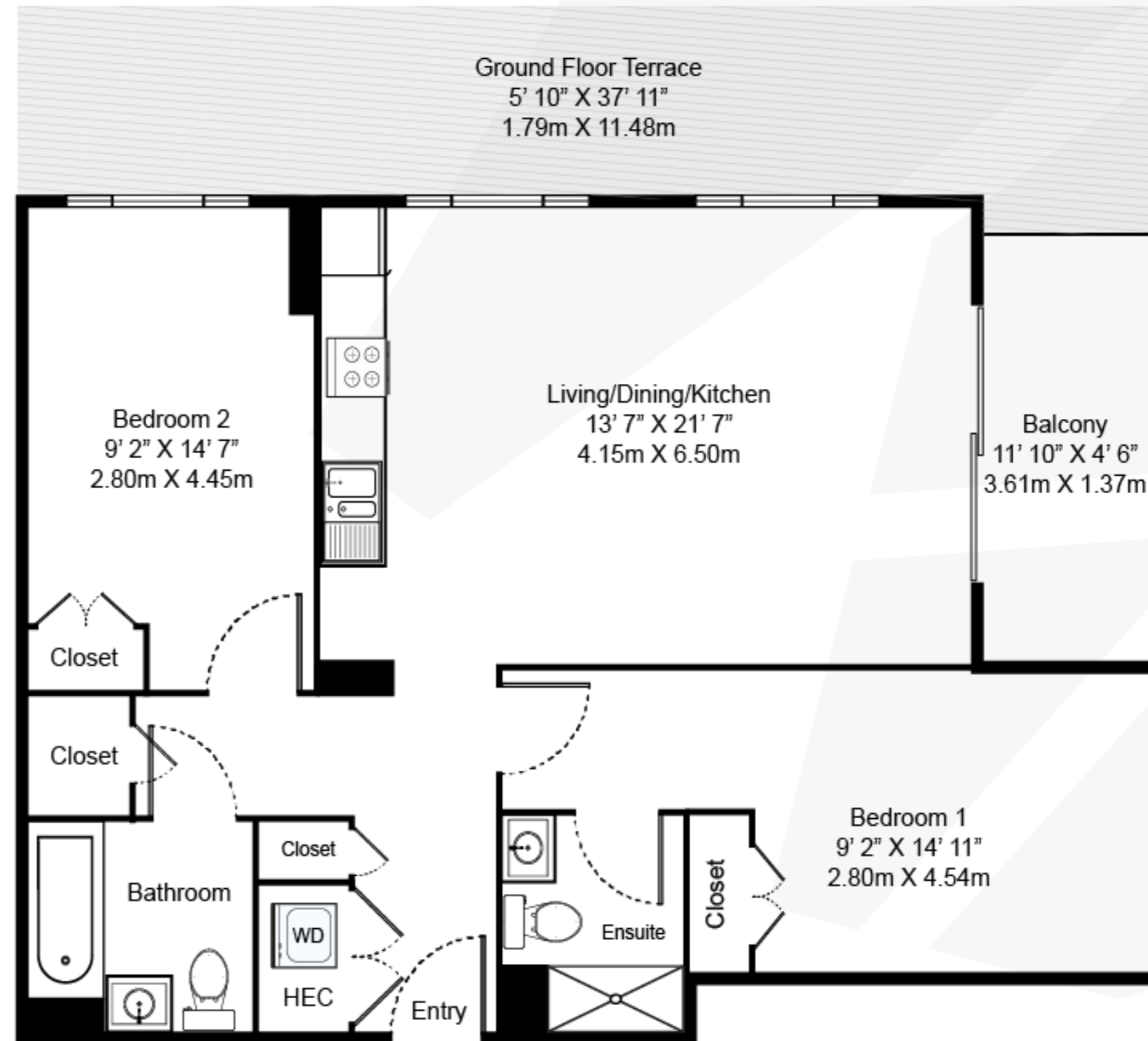
# TWO BEDROOM, TWO BATHROOM – ASHA POINT

## Floorplan AB1

This two-bedroom, two-bathroom dual aspect south east facing apartment offers the ideal living space with private outdoor balcony and stunning alternative city views on higher floors with some lower floors offering views of the private residents' gardens.

Features include underfloor heating throughout the living spaces, floor-to-ceiling windows, splash-back tiling in the kitchen and additional built-in storage space.

This floorplan offers a selection of furnished and unfurnished apartments.



Internal Space: 797 sqft/74 sqm  
 External Space: 52 sqft/4.8 sqm (ground floor 291 sqft/27 sqm)

**Apartments:** 104, 207-2407

**Rent:** Starting from £2,749



020 7182 9400  
[parkcentraleast@livingbylendlease.com](mailto:parkcentraleast@livingbylendlease.com)

For illustrative purposes only. Exact measurements and dimensions may vary by unit. See your leasing associate for specific apartment information.

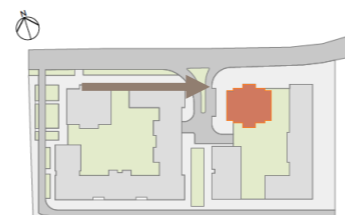
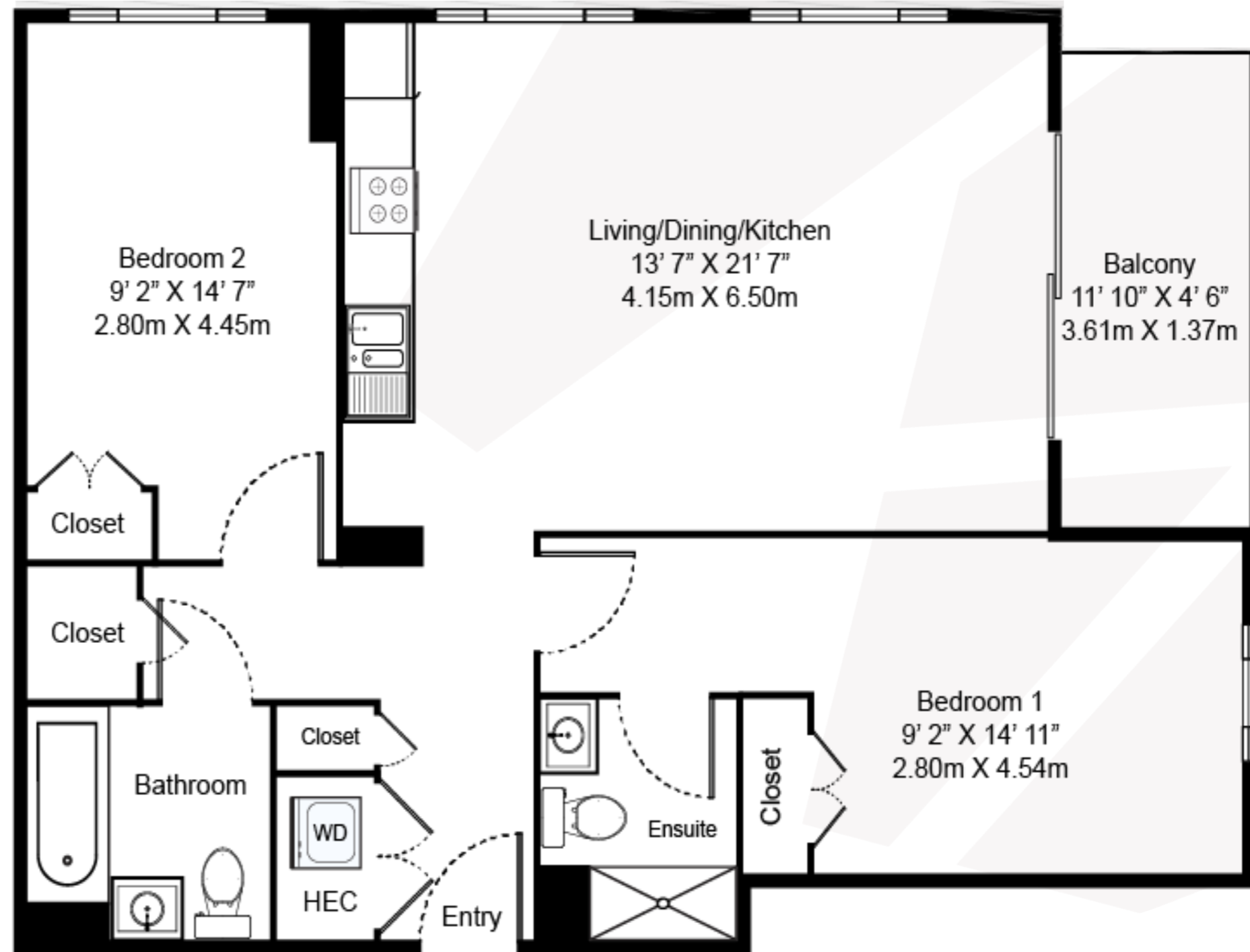
# TWO BEDROOM, TWO BATHROOM – ASHA POINT

## Floorplan AB1

This two-bedroom, two-bathroom dual aspect north west facing apartment offers the ideal living space with private outdoor balcony and stunning views of the London skyline on higher floors. Lower floors offer a vibrant street life below for endless people-watching all from your floor-to-ceiling windows with built-in blinds.

Features include underfloor heating throughout the living spaces, splash-back tiling in the kitchen and built-in storage space.

This floorplan offers a selection of furnished and unfurnished apartments.



Internal Space: 797 sqft/74 sqm  
External Space: 52 sqft/4.8 sqm (ground floor 291 sqft/27 sqm)

**PARK  
CENTRAL  
EAST**



020 7182 9400

[parkcentraleast@livingbylendlease.com](mailto:parkcentraleast@livingbylendlease.com)

For illustrative purposes only. Exact measurements and dimensions may vary by unit.  
See your leasing associate for specific apartment information.

PCE | AB1.3 – June 2021

**Apartments:** 203-2403

**Rent:** Starting from £2,749

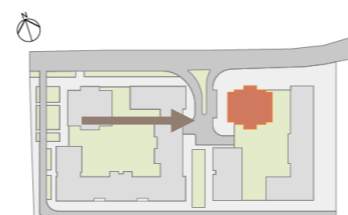
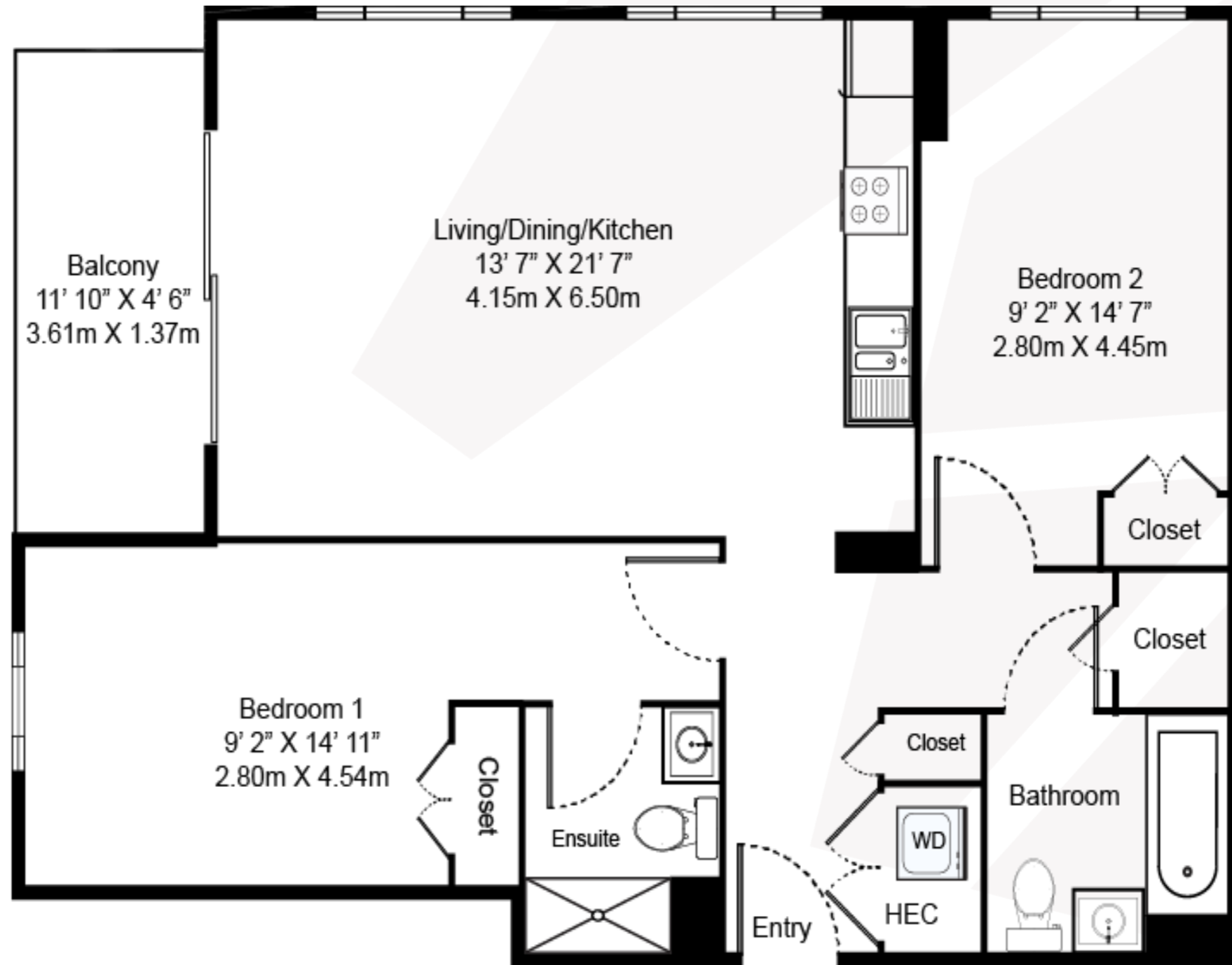
# TWO BEDROOM, TWO BATHROOM – ASHA POINT

## Floorplan AB1

This two-bedroom, two-bathroom dual aspect south west facing apartment offers the ideal living space with private outdoor balcony and stunning sunlight exposure. Enjoy alternative city views on higher floors whilst on lower floors you're offered a cosy respite from the city action.

Features include underfloor heating throughout the living spaces, floor-to-ceiling windows, splash-back tiling in the kitchen and additional built-in storage space.

This floorplan offers a selection of furnished and unfurnished apartments.



Internal Space: 797 sqft/74 sqm  
External Space: 52 sqft/4.8 sqm (ground floor 291 sqft/27 sqm)



020 7182 9400  
[parkcentraleast@livingbylendlease.com](mailto:parkcentraleast@livingbylendlease.com)

For illustrative purposes only. Exact measurements and dimensions may vary by unit. See your leasing associate for specific apartment information.

PCE | AB1.4 – June 2021

**Apartments:** 202-2402

**Rent:** Starting from £2,749